



# BROOK GAMBLE



## Flat 20 Eversley Court St. Annes Road , Eastbourne, BN21 2BS

Forming part of an impressive Berkeley Homes gated development at Eversley Court, this ground floor apartment is in good order throughout and provides spacious accommodation including an en-suite shower room to the master bedroom, and a modern fitted kitchen and bathroom. A particular feature of the apartment is the "turret" area providing a bright spacious open plan dining space. Further benefits include gas central heating and double glazed windows as well as a garage and the delightful parklike communal gardens. Well located for access into Eastbourne Town Centre and Seafront, an early appointment to view is highly recommended. Sole Agents.

**£267,500**

# Flat 20 Eversley Court St. Annes Road , Eastbourne, BN21 2BS



- Chain Free
- En Suite to Master Bedroom
- Spacious Accommodation
- Sole Agents
- Sought After Upperton Location
- Double Glazed Windows
- Attractive Communal Grounds
- Modern Kitchen & Bathroom
- Gas Central Heating
- Garage

## Communal Entrance

## Private Entrance Hall

## Lounge

14'9" x 10'7" (4.50m x 3.23m)

## Dining Area

10'4" x 10'3" (3.15m x 3.12m)

## Kitchen

10'6" x 6'7" (3.20m x 2.01m)

## Bedroom 1

16'6" x 10'8" (5.03m x 3.25m)

## En-Suite Shower Room

## Bedroom 2

10'10" x 8'5" (3.30m x 2.57m)

## Bathroom

## Outside

## Other Information

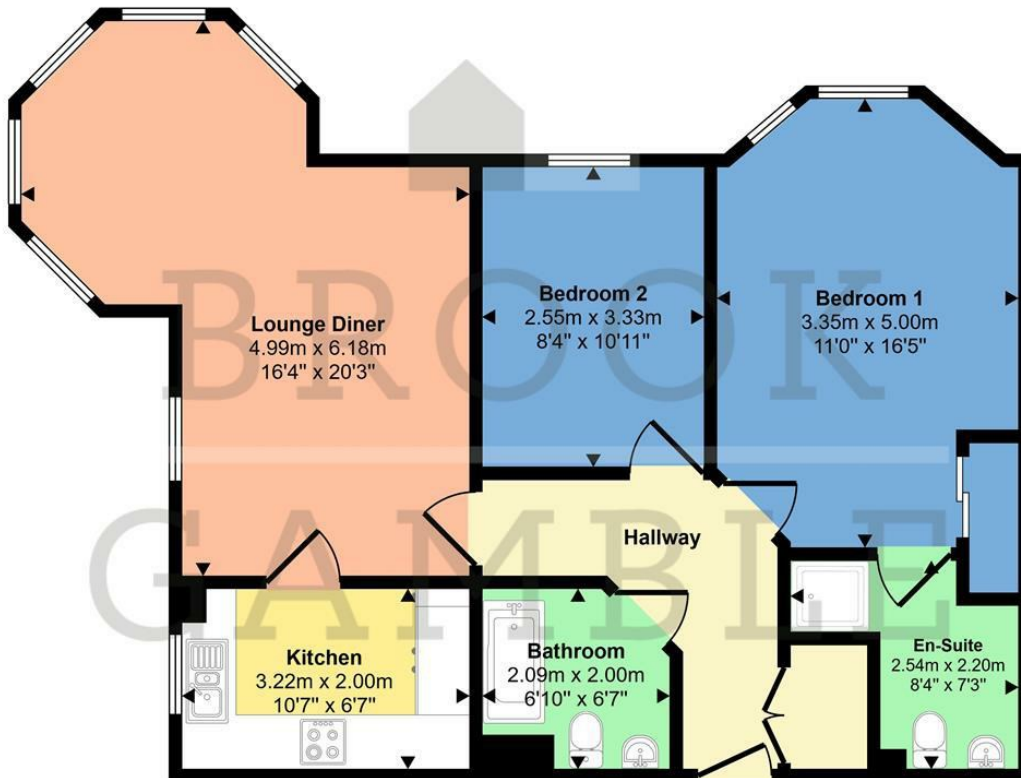


## Directions



# Floor Plan

Approx Gross Internal Area  
70 sq m / 755 sq ft



Floorplan

This floorplan is only for illustrative purposes and is not to scale. Measurements of rooms, doors, windows, and any items are approximate and no responsibility is taken for any error, omission or mis-statement. Icons of items such as bathroom suites are representations only and may not look like the real items. Made with Made Snappy 360.

These particulars, whilst believed to be accurate are set out as a general outline only for guidance and do not constitute any part of an offer or contract. Intending purchasers should not rely on them as statements of representation of fact, but must satisfy themselves by inspection or otherwise as to their accuracy. No person in this firm's employment has the authority to make or give any representation or warranty in respect of the property.

